

Operation Instruction

Hydraulic Herculean Puller



Hangzhou WREN Hydraulic Equipment Manufacturing Co.,Ltd

Address: No.24, Xingxing Road, Xingqiao, Linping , Hangzhou, China

TEL: +86-571-88115720 FAX: +86-571-88110210

Postcode: 310015

[Http://www.wrenchina.com](http://www.wrenchina.com)

Email:info@wrenchina.com

Operation Instruction Hydraulic Herculean Puller

This handbook is an integrating part of the machine, and must be carefully read in full, before a completing every operation. It must be kept in case of future references, until the getting rid of the machine.

The handbook is addressed to professional users, it reflects the state of the technique at the moment of the commercialization of the machine, and cannot be considered inadequate just because on the ground of new experience it will be afterwards up-to-date.

WREN CO. declines every responsibilities due to the following situations;

- improper use of the machine or its use by not professional operators;
- wrong installation;
- wrong feeding;
- absences in maintenance;
- alterations or interventions not authorized by the manufacturer;
- employment of not original parts, or not suitable for the model.

IMPORTANT INSTRUCTIONS ON RECEIPT

Always inspect the packages and all the material received, this to verify possible damages happened during the transport; in this case make a complaint to the transport company.

INFORMATION ABOUT THE RISKS RESULTING FROM THE OF THE PRODUCT



This is the symbol of danger. Every time you meet this symbol it means that damages more or less serious towards persons, animals and things are possible. The kind of danger and the precautions to adopt in order to contain the relative risks are every time quoted in the text following the symbol.



DANGER: EVERY TIME THIS WARNING IS IGNORED, IT EXISTS A MINOR RISK FOR PERSONS' AND ANIMALS' SECURITY AND/OR DAMAGES TO THINGS.



WARNING: EVERY TIME THIS WARNING IS IGNORED, IT EXISTS A MINOR RISK FOR PERSONS' AND ANIMALS' SECURITY AND/OR DAMAGES TO THINGS.

The user is requested to follow always and carefully these precautions. The manufacturer declines every responsibilities and wounds resulting from an improper use of the product.

SAFETY ISSUES

Hydraulic Herculean Puller is a power tool. Operators must read and understand all safety precautions and operation instructions included with the puller, electric pump, and cylinder before using the puller.

SAFETY FIRST

▲ **WARNING:** To avoid personal injury and possible equipment damage,

- Be sure that every components of the hydraulic system are designed for a max. pressure of 700bar (10,000 psi)

- Never rely on this puller to support, carry, or transport the workpiece being pulled.
- The following procedures should only be performed by qualified, trained personnel who are familiar with this equipment.
- Safety glasses must be worn at all times by the puller operator and anyone within sight of the puller. Locate the puller in an isolated area or shield it to minimize danger to others.
- The owner of this tool must ensure that all safety-related decals are installed, maintained and replaced if they become hard to read.
- Do not exceed equipment ratings. Try to minimize the danger of overloading. Overloading causes equipment failure and possible personal injury.
- The pressure gauge is installed in the system to monitor operating pressure. It is your window to what happening in the system.
- Immediately replace worn or damaged parts by genuine WREN parts.
- Keep hydraulic equipment away from flames, heat, sharp edge, and chemical corrosion
- To avoid personal injury and possible equipment damage, NEVER get rid of the protective device installed on the puller. Do not dismount any components of the puller without WREN's permission. Do not readjust the safety valve of the cylinder.
- Never stand to each side of the puller in case of personal injury in system operation.

HOSES

- should a hydraulic hose ever rupture, burst, or need to be disconnected, immediately shut off the pump. Never grasp a leaking pressurized hose with your hands.
- Avoid damaging hydraulic hose. Avoid sharp bends and kinks when routing hydraulic hoses. Using a bent or kinked hose will cause severe backpressure. Sharp bends and kinks will internally damage the hose leading to premature hose failure.
- Do not drop heavy objects on hose. A sharp impact may cause internal damage to hose wire strands. Applying pressure to a damaged hose may cause it to rupture.
- Do not subject the hose to potential hazard, such as fire, sharp surfaces, heavy impact, or extreme heat or cold. Do not allow the hose to kink, twist, curl, or bend so tightly that the oil flow within the hose is blocked or reduced. Periodically inspect the hose for wear, because any of these conditions can damage the hose and possibly result in personal injury.
- Do not use the hose to move attached equipment. Stress can damage the hose and possibly cause personal injury.
- Hose material and coupler seals must be compatible with the hydraulic fluid used. Hoses also must not come in contact with corrosive material such as creosote-impregnated objects and some paints. Consult the manufacturer before painting a hose. Never paint a coupler. Hose deterioration due to toxic materials can result in personal injury.

Description

WREN LA50/100T, heavy tonnage, all-purpose hydraulic puller, is made of super high strength alloy. With its character of point-to-point control and double acting design, it is used for dismounting giant axle and hole type work piece. The wheeler design enables it move freely to change workplace.

Operation

- READY** -----Choose 2 pawls or 3 pawls to work according to the work piece. When transferring to 2 or 3 pawls, loose the bolt in master cylinder, rotate the cylinder to proper position, then fixed;
- Choose the right puller mouth according to the work piece that is being pulled to operate puller foot;
- According to the relative location between puller and being pulled work piece to choose the right compensating rod with proper length;
- Connecting the power, if the power light turns red, the facility is in inactive state.

Before operating the machine, it should be confirm if hose and coupler are tightened well, and if the cylinder is filled with oil. Never use the equipment without oil.

Try circulating

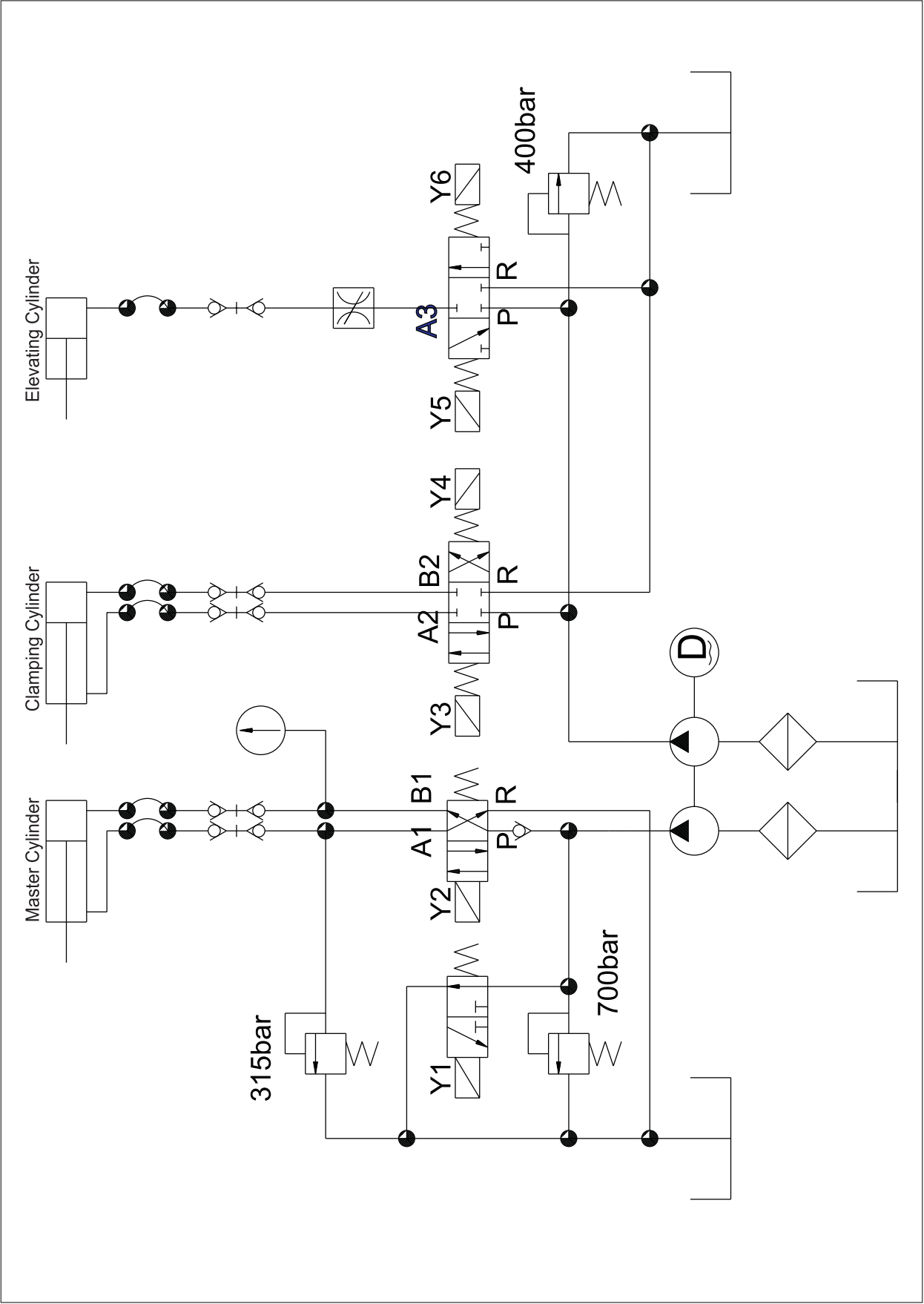
- Press the lift or down button, and inspect if the lifting device works well.
- Press the opening or fastening button, and checkup if the open-and-fasten action right or not.
- Press the forward or backward button, and check whether the fore-and-aft movement of master cylinder is correct.

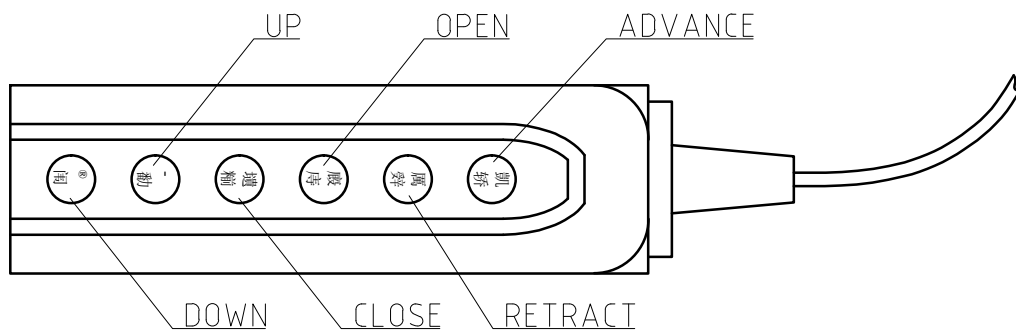
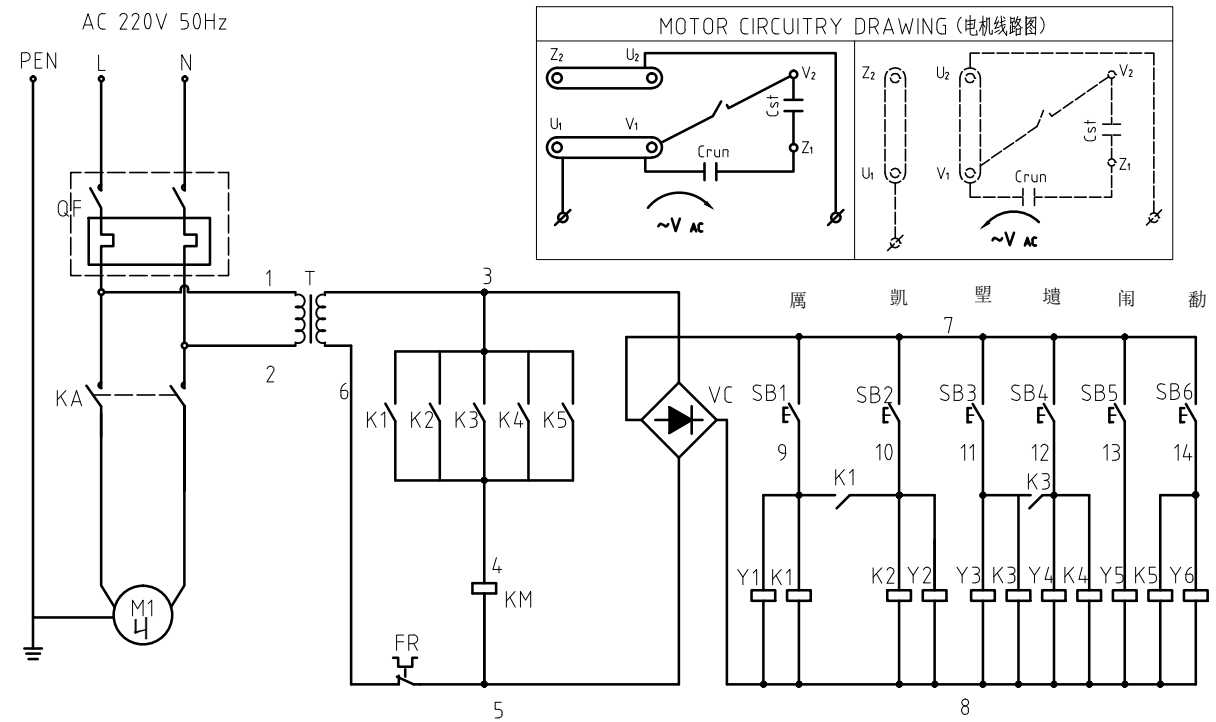
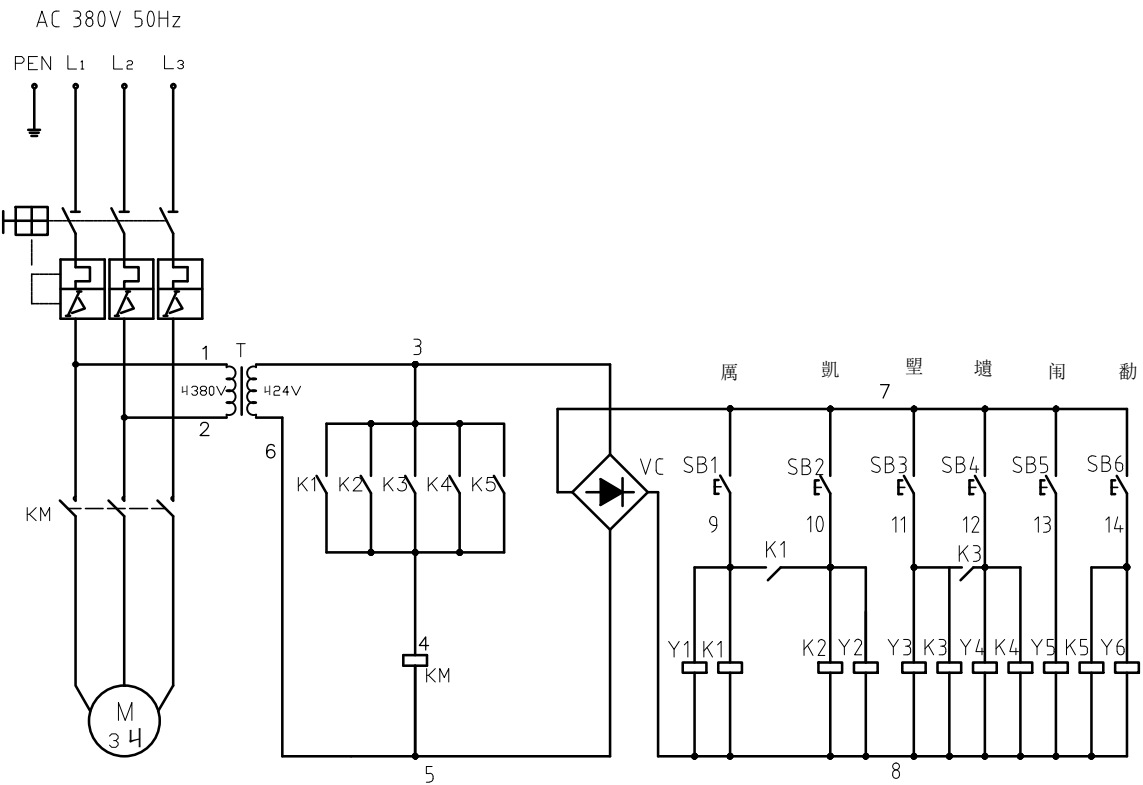
Operation

- Place the puller to the work place, press lift or down to make the center shift in line with work piece's central line.
- Press the open button, loose the pawls, and push the cart into bound of the pawls, then press the fasten button to hook the work piece.
- Place a proper length compensating pressure pin at the top of main cylinder according to location of work piece.
- Press forward, and the light turns green. Then the cylinder draws out to dismount the work piece; after pulling out, press the backward to release the piston, then press open until the pawls are completely unlocked.
- Caution: when working, the movable spring central thimble is necessary for protecting the other parts from damaging.

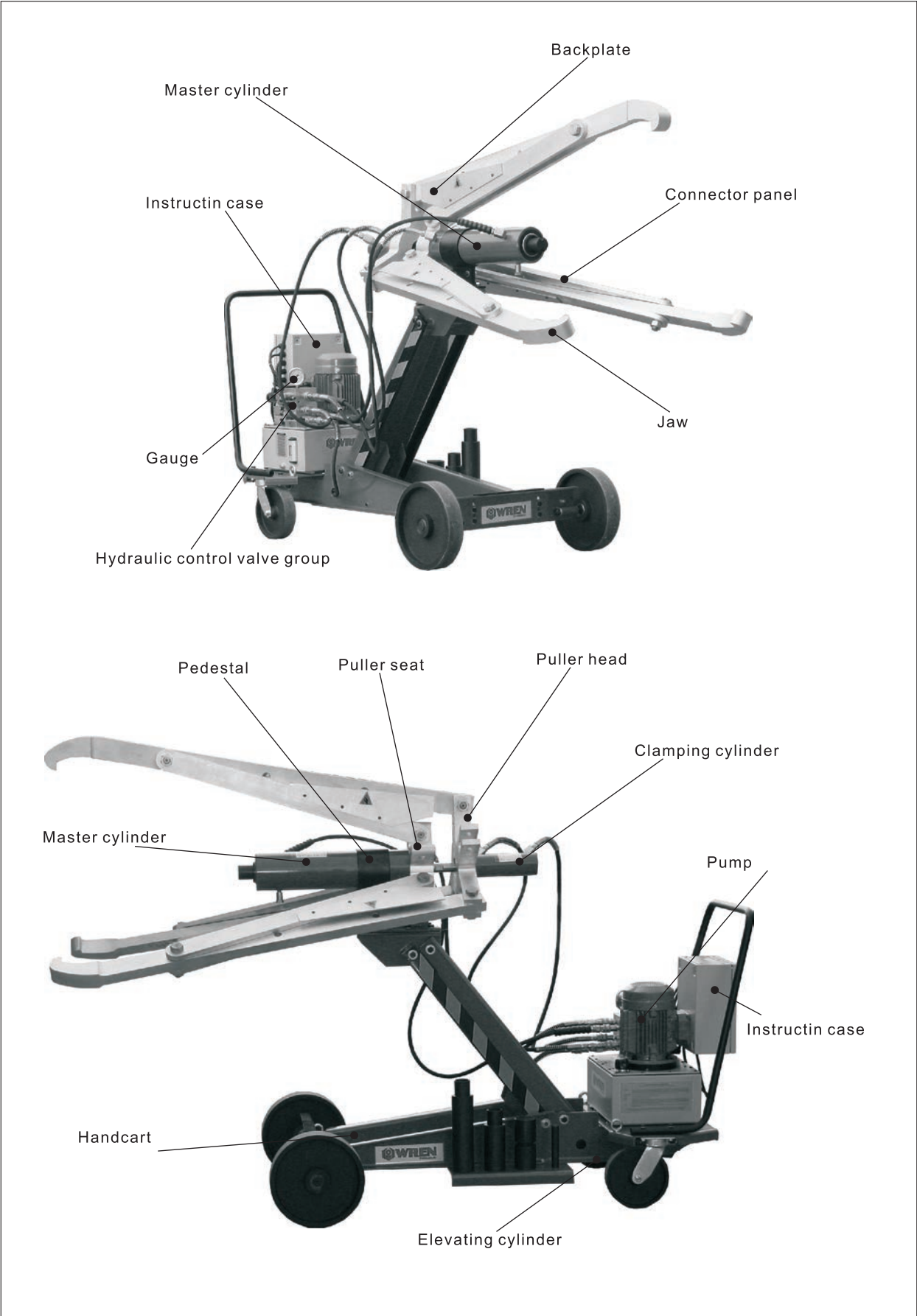
Please fix the location before the pawls unlock the work piece, if not, the work piece will strike the equipment. If the axle's and the work piece's center are not in the same circle, please reset it

Oil route schematic diagram





Appearance map



LA Automatic Series Selection Table

Model	LA50L337	LA100L337
Capacity (T)	50	100
Min open (mm)	64	120
Pulling depth of Min.open	651	490
Max.open (mm)	1150	1150
Depth of max. open	559	340
Overall length (mm)	2590	2610
Regulation of puller center height (mm)	450~1120	590~1155
Cylinder stroke (mm)	337	337
Source of power (single phase)	220V/380V	220V/380V

Fully automatic hydraulic design-automatically up and down, grip and pull.

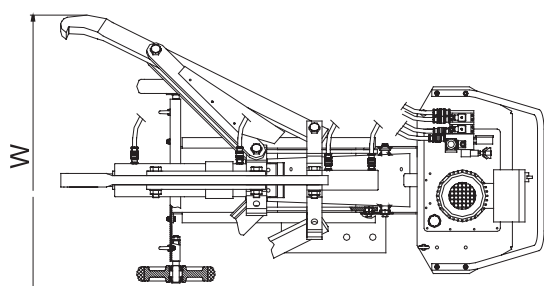
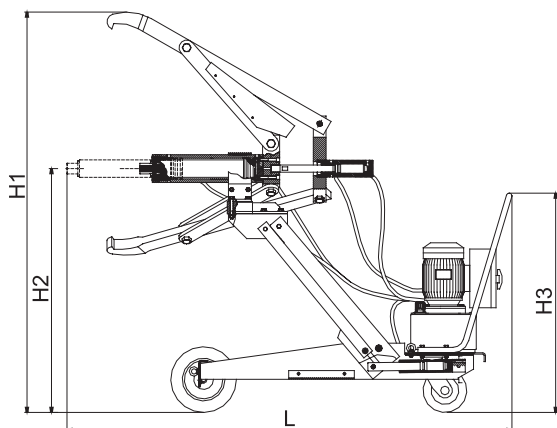
Made of alloy steel with super-high strength; double-acting hydraulic design. Used for dismantling large shafts and perforating work pieces.

Available in 2 and 3 jaws design allows adding a pulling disc to pull bearings.

Roller cart makes it available to change workplace.

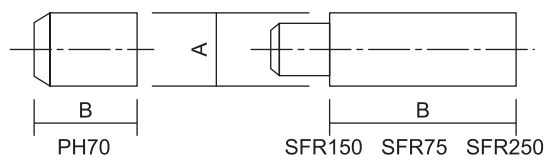


LA Automatic Series Dimension



Model	LA50L337	LA100L337
L (mm)	2590	2610
W (mm)	1264	1264
H1 (mm)	1829	1887
H2 (mm)	1114	1155
H3 (mm)	1002	1002

LA Automatic Series Affix



Model	LA50L337 A (mm)	LA100L337 A (mm)	B (mm)	Quantity
PH70	70	108	76	1
SFR150	70	108	151	1
SFR75	70	108	77	1
SFR250	70	108	251	1





All Wren products are guaranteed against defects in workmanship and materials for as long as you own them. Under this guarantee, free repair or replacement will be made to your satisfaction.

**RECYCLED
PAPER** 

www.wrenchina.com